

Keri Keri 0321

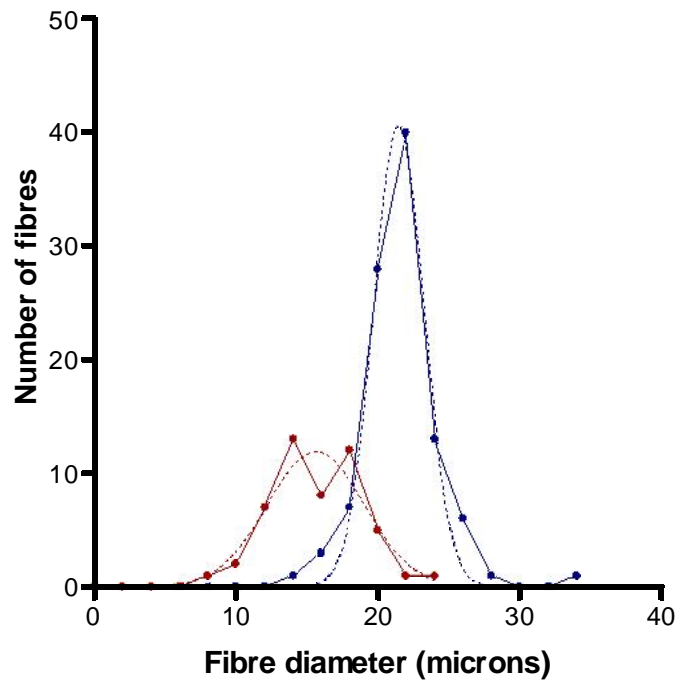
Register no: JW0300

Merino ram

DENSITY:		LENGTH:	
Mean fibre diameter (microns)	21.2	Crimps per cm	
Secondary follicle to primary follicle ratio	29.0	Fibre growth rate (mm per day)	
Follicle density (per mm ²)	58.3	Fibre length to staple length ratio	
SKIN THICKNESS(mm compressed):	0.96	CYLINDRICAL FIBRES (%):	

DIAMETER DISTRIBUTION OF PRIMARY AND SECONDARY FIBRES

	PRIMARY FIBRES	SECONDARY FIBRES
Mean (µm)	15.4	21.4
SD (µm)	3.2	2.6
CV (%)	20.7	12.5
Min (µm)	8.0	14.0
Max (µm)	24.0	34.0
Medullation (%)	0.0	0.0



Skin and fleece tests conducted by Dr. J.E. Watts M.V.Sc., Ph.D.

16 December 2004